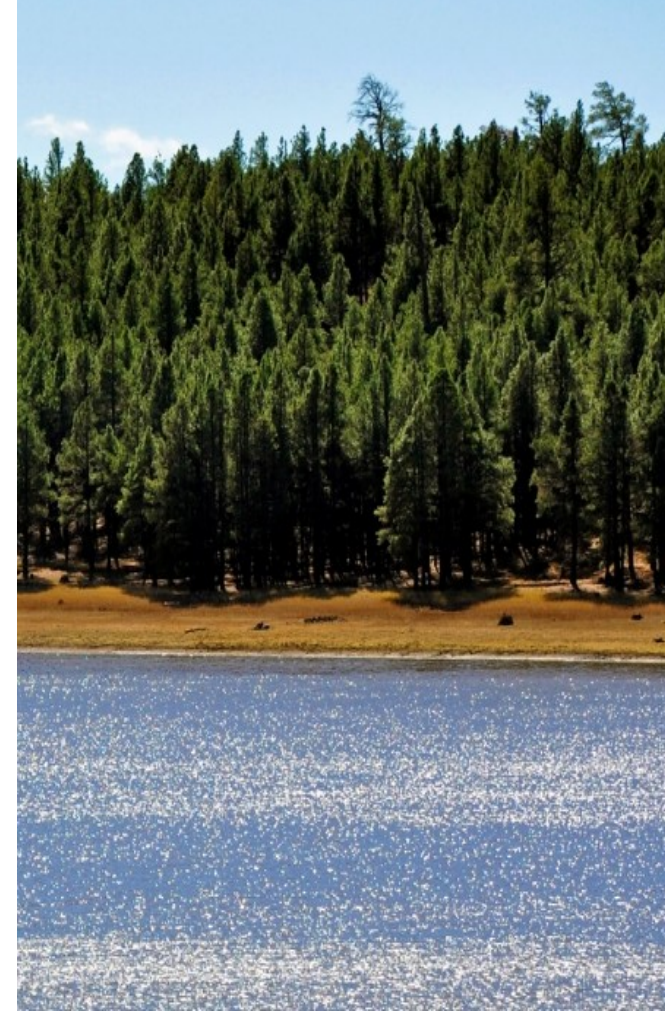
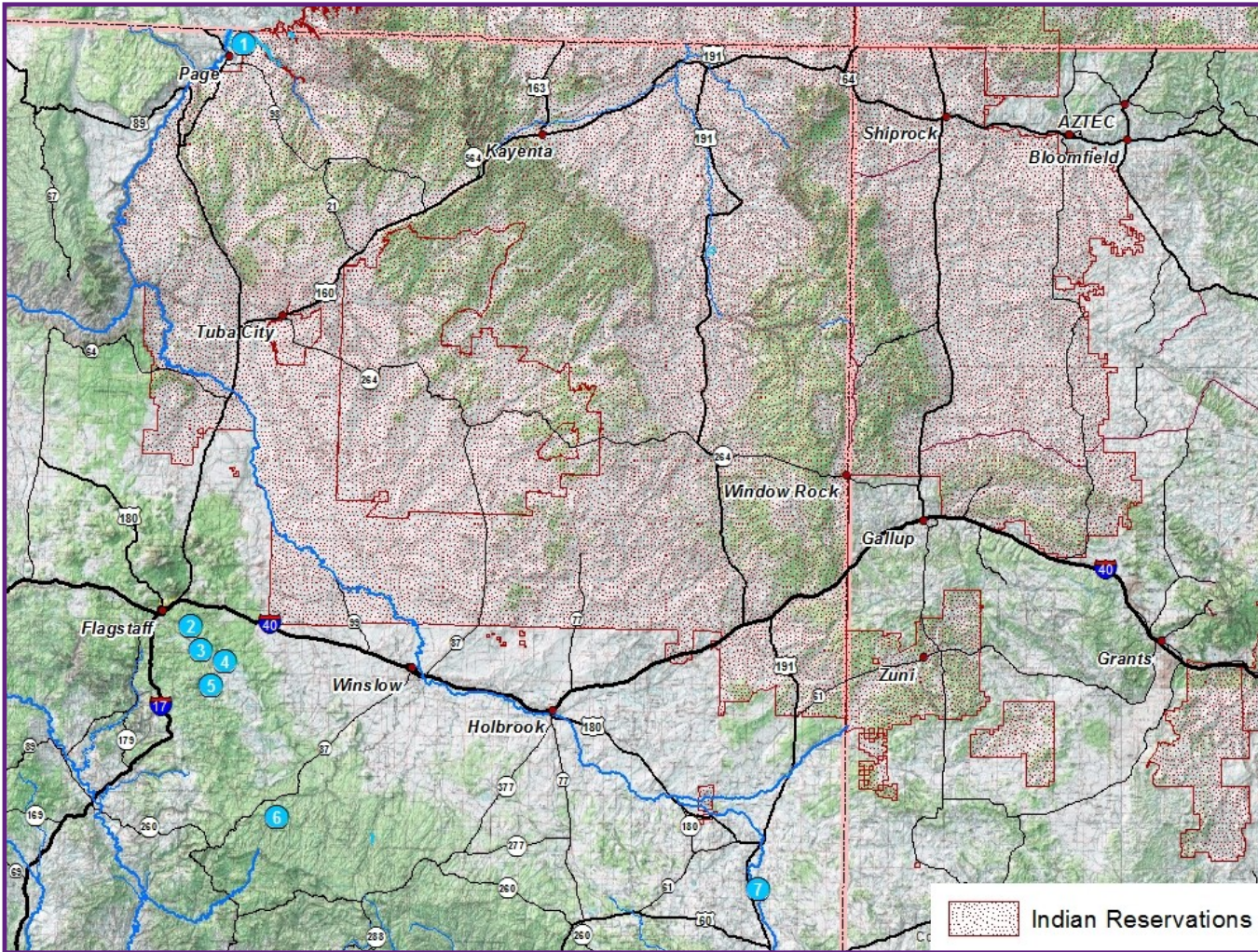


ARIZONA Water Recreation



Prior to fishing at these lakes, make sure that you have the appropriate licenses and are familiar with the governing agency's fishing regulations for that particular lake.



Arizona Game & Fish
5000 W. Carefree Highway
Phoenix, AZ 85086
www.azgfd.com



Aztec Visitor Center
110 N. Ash Avenue
Aztec, NM 87410
(505) 334-9551
(888) 543-4629
www.AztecNM.com



EXPLORE

www.aztecnm.com (888) 543-4629

Map # 1 - Lake Powell Glen Canyon National Recreation

Operated by the National Park Service, Lake Powell is the second largest artificial lake in the country. The lake was formed by Glen Canyon Dam and named in honor of Civil War veteran and one-armed explorer John Wesley Powell, who led a scientific expedition in wooden boats down the Colorado River through the Grand Canyon in 1869.

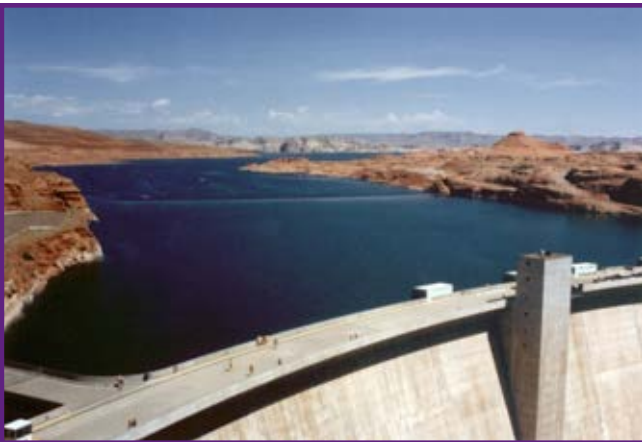


The Glen Canyon National Recreation Area surrounding Lake Powell encompasses over 1.2 million acres and offers unparalleled opportunities for water-based & backcountry recreation. The recreation area stretches for hundreds of miles from Lees Ferry in Arizona to the Orange Cliffs of southern Utah, encompassing scenic vistas, geologic wonders, and a vast panorama of human history.

Activities: Boating, camping, fishing, hiking, kayaking, swimming, mountain biking, and guided tours of Glen Canyon Dam and Rainbow Bridge.

Facilities: Four visitor centers, marinas, four developed campgrounds operated by the National Park Service, four developed campgrounds operated by Park Concessioners, and shoreline and back country primitive camping.

More Info at: www.nps.gov/glca



Map #2 - Marshall Lake

Located 15 miles southeast of Flagstaff, Marshall Lake is a small marshy body of water that's generally full of coots and other waterfowl. During most years the lake has enough water in it to be stocked with trout by the Arizona Game and Fish Department.

Activities: Camping (primitive), fishing, mountain biking, wildlife watching, and photography.

Facilities: No developed campgrounds, only dispersed, primitive camping, no toilets, tables, or drinking water.

Map #3 - Upper Lake Mary

Located 16 miles southeast of Flagstaff, Upper Lake Mary is the largest of Flagstaff's twin lakes (Lower Lake Mary is often dry). This long, narrow reservoir is especially popular with power boaters and water skiers because there is no motor size limit on it.

Activities: Boating, camping, climbing, fishing, hiking, swimming, waterskiing and windsurfing.

Facilities: Two developed campgrounds: Pine Grove and Lake View

Map #4 - Ashurst Lake

Located approx. 20 miles southeast of Flagstaff, AZ, Ashurst Lake is in an open, high mountain land surrounded by mixed spruce/fir forest.

Activities: Boating, biking, fishing, windsurfing, and wildlife watching.

Facilities: Two developed campgrounds: Ashurst Lake and Forked Pine with 25 campsites each with tables, fire rings, and cooking grills. Drinking water and toilets are available at these campgrounds only when they are open (early May through mid-October).

Map #5 - Mormon Lake

Mormon Lake is the largest natural lake in Arizona. During droughts it's frequently not so large, and not so much a lake, even bone dry. There is a little resort on the lake's western shore where one can rent recreational equipment.

Activities: Boating, camping, fishing, hiking, mountain biking, windsurfing, with winter snowmobile and cross-country skiing.

Facilities: Campsites at Dairy Springs and Double Springs Campgrounds with tables, fire rings, cooking grills, drinking water, and vault toilets.

Map #6 - C.C. Cragin (Blue Ridge) Lake

Located about 52 miles southwest of Winslow AZ or 69 miles southeast of Flagstaff, this narrow, winding body of water looks more like a canyon-bound river than a lake. Providing the water source for Payson, AZ, this lake is nestled between forested canyon walls and provides picturesque water recreation in a secluded, wooded setting.

Activities: Fishing, boating (less than 10 hp), camping, hiking, wild-life viewing, and photography.

Facilities: Developed campground at Rock Crossing Campground located 4 miles from the lake on FR 751. Thirty-two (32) single unit campsites and with tables, fire rings, and cooking grills. Drinking water at the campgrounds, toilets (self-composting), and hiking trails nearby. Campground is open Memorial Day to mid-fall, closed during winter months.

More info at: www.fs.usda.gov/recarea/coconino

Map #7 - Lyman Lake

Lyman Lake is located along the Little Colorado River between St. Johns and Springerville just off of US 191. The lake is a popular fishing spot. When the surface acreage is large enough, water sports activities are very popular. The lake is located at an approximate elevation of 6,000 feet and is close to the White Mountains.

Activities: Boating, camping, fishing, hiking, swimming, wildlife watching, and photography.

Facilities: Two developed campgrounds: Ashurst Lake and Forked Pine with 25 campsites each with tables, fire rings, and cooking grills. Campground season is from early May through mid-October. Drinking water and toilets are available at these campgrounds only when they are open.

More info at: azstateparks.com/lyman-lake