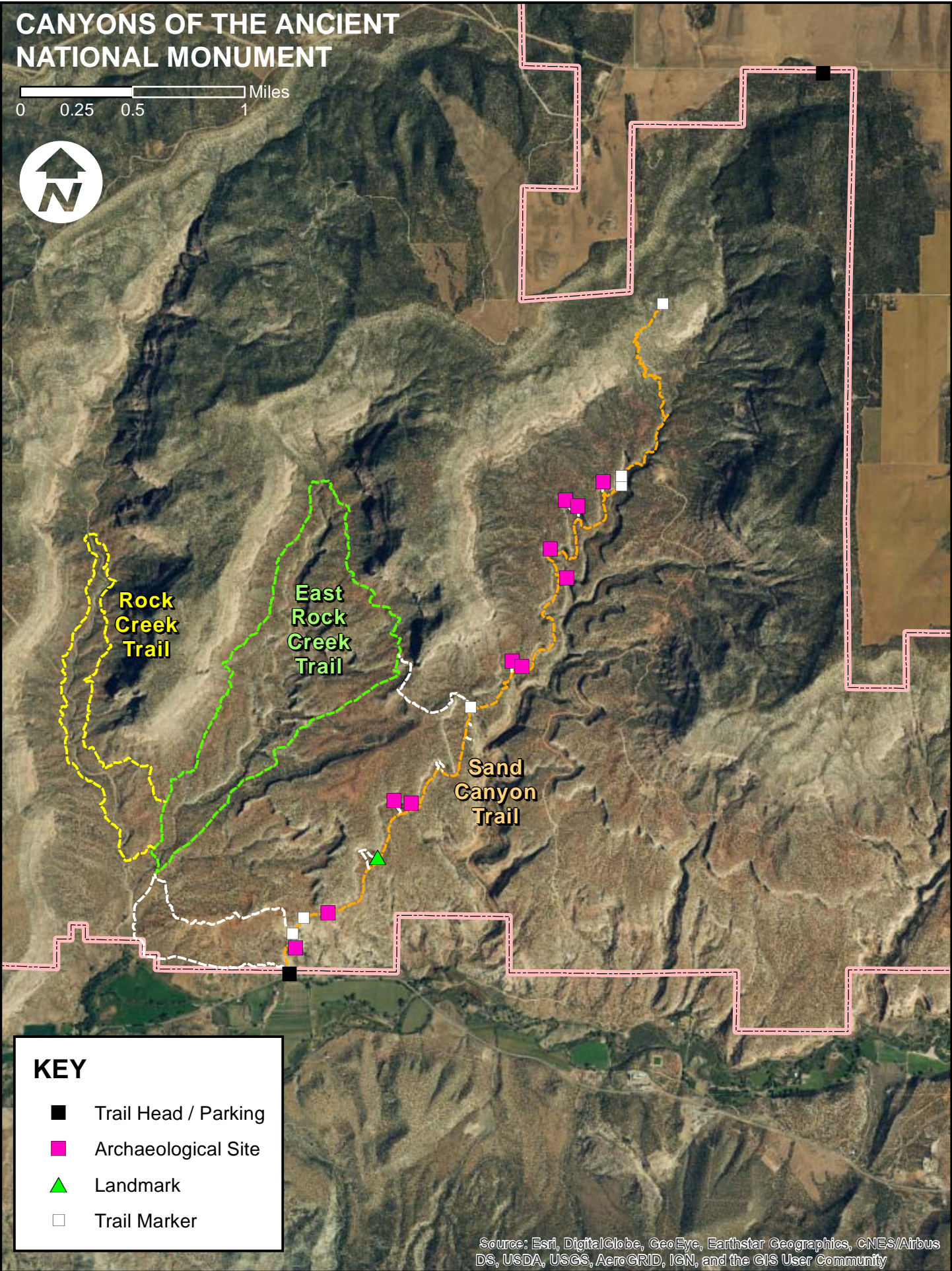


CANYONS OF THE ANCIENT NATIONAL MONUMENT

0 0.25 0.5 1 Miles



KEY

- Trail Head / Parking
- Archaeological Site
- ▲ Landmark
- Trail Marker

Source: Esri, DigitalGlobe, GeoEye, Earthstar Geographics, CNES/Airbus DS, USDA, USGS, AeroGRID, IGN, and the GIS User Community