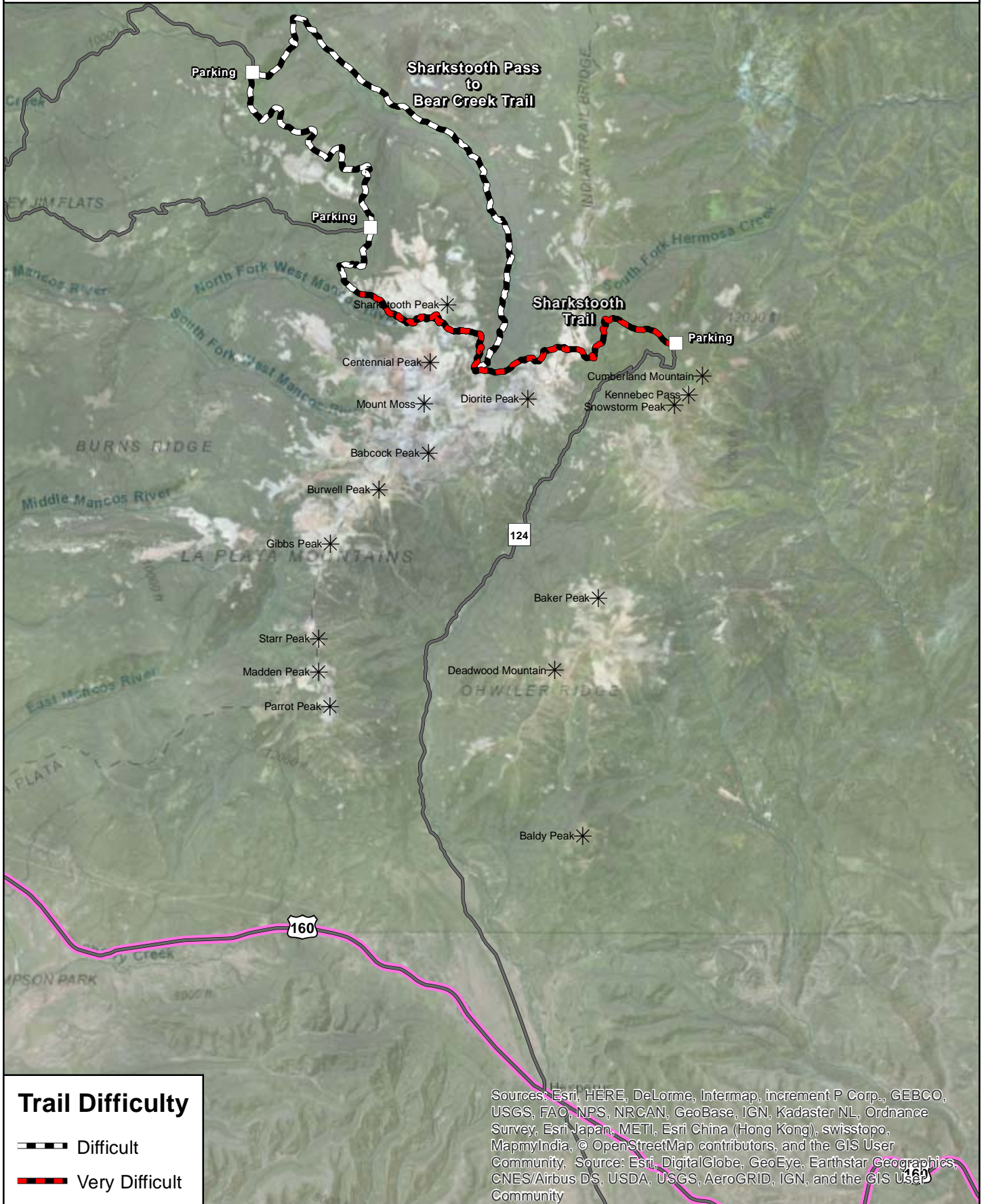




# La Plata Mountains Mountain Bike Trails



## La Plata Mountains Mountain Bike Trail System

Trail Name	Miles	Kilometers	Trail Difficulty	Rating	MTB Project Ranking		
					System	Colorado	National
<b>San Juan National Forest</b>							
Bear Creek to Sharkstooth Pass Trail	18.2	29.3	◆ Difficult	2.5	2	348	3,153
Sharkstooth Pass Trail	7.4	12	◆◆ Extreme Difficulty	3	13	1,350	12,871

Trail Difficulty, Rating, and Ranking based on the MTB Project ([www.mtbproject.com](http://www.mtbproject.com))

### Trail Difficulty Key

- Easy      5% grade; 2 inch obstacles
- Intermediate      10% grade; 8 inch obstacles
- ◆ Difficult      15% grade; 15 inch obstacles, occasional harder sections
- ◆◆ Extreme Difficulty      20% grade, 15+ inch obstacles, many harder sections