



New Mexico, USA

  @CityofAztec

BLUE MESA RESERVOIR

General Information

Located in Western Colorado near the town of Gunnison, Blue Mesa Reservoir is Colorado's largest body of water. Blue Mesa Dam was built in 1966 and was the first and largest of the three Aspinall Unit dams intended to store and control spring flows on the Gunnison River. Blue Mesa Reservoir is 20 miles long and is the largest Lake Trout and Kokanee salmon fishery in the United States. It lies within the Curecanti National Recreation Area.

Curecanti National Recreation Area
102 Elk Creek
Gunnison, CO 81230
(970) 641-2337
www.nps.gov/cure/index.htm

Activities

Boating, fishing, boat-in, developed, and primitive camping, hiking, horseback riding, hunting, and wildlife viewing.

Facilities

Visitor center at Elk Creek, campgrounds (8), marinas (2), boat ramps, day use / picnic areas, hiking trails, and Pappy's Restaurant.

Elk Creek Complex (970) 641-0707

The Elk Creek complex is the major facility of Blue Mesa Reservoir. It features a visitor center, the main marina, Pappy's Restaurant, campground and RV dump station. Campground consists of four loops with 160 campsites, water, electric hookups (Loop D), flush and vault restrooms, and showers also available. The marina offers in and out boat launching, a store, fish tackle, gasoline, boat rentals, kayaks, canoes, SUP's and boat slips. The marina and the restaurant are only open in the summer, while the visitor center and campground are open year-round.

www.nps.gov/cure/planyourvisit/camp_elk_creek.htm
www.thebluemesa.com

Lake Fork Marina (970) 641-3048

The marina offers in and out boat launching, a store and tackle shop, gasoline, boat rentals, boat slips and guided fishing. There is a campground with paved camping spots perfect for RV's and trailers.

www.nps.gov/cure/planyourvisit/camp_lake_fork.htm
www.thebluemesa.com

<u>Campgrounds</u>	<i>Electric</i>	<i># of Sites</i>	<i>RVs</i>	<i>Accessible Sites</i>	<i>Showers</i>	<i>Dump Station</i>	<i>Reservable</i>
Dry Gulch	No	9	Yes	No	No	No	No
East Elk Creek	No	1	Yes	No	No	No	Yes
Elk Creek	Yes	160	Yes	Yes	Yes	Yes	Yes
Gateview	No	6	No	No	No	No	No
Lake Fork	No	90	Yes	Yes	Yes	Yes	Yes
Ponderosa	No	28	Yes	No	No	No	No
Red Creek	No	2	Yes	No	No	No	Yes
Stevens Creek	No	53	Yes	Yes	No	No	Yes

Fees

Campground fees.

Fishing license is required from the Colorado Parks and Wildlife.

Fishing

Rainbow, lake, and brown trout, kokanee salmon, yellow perch, and longnose/white sucker are caught within the lake. Fishing restrictions are enforced.

Fishing License

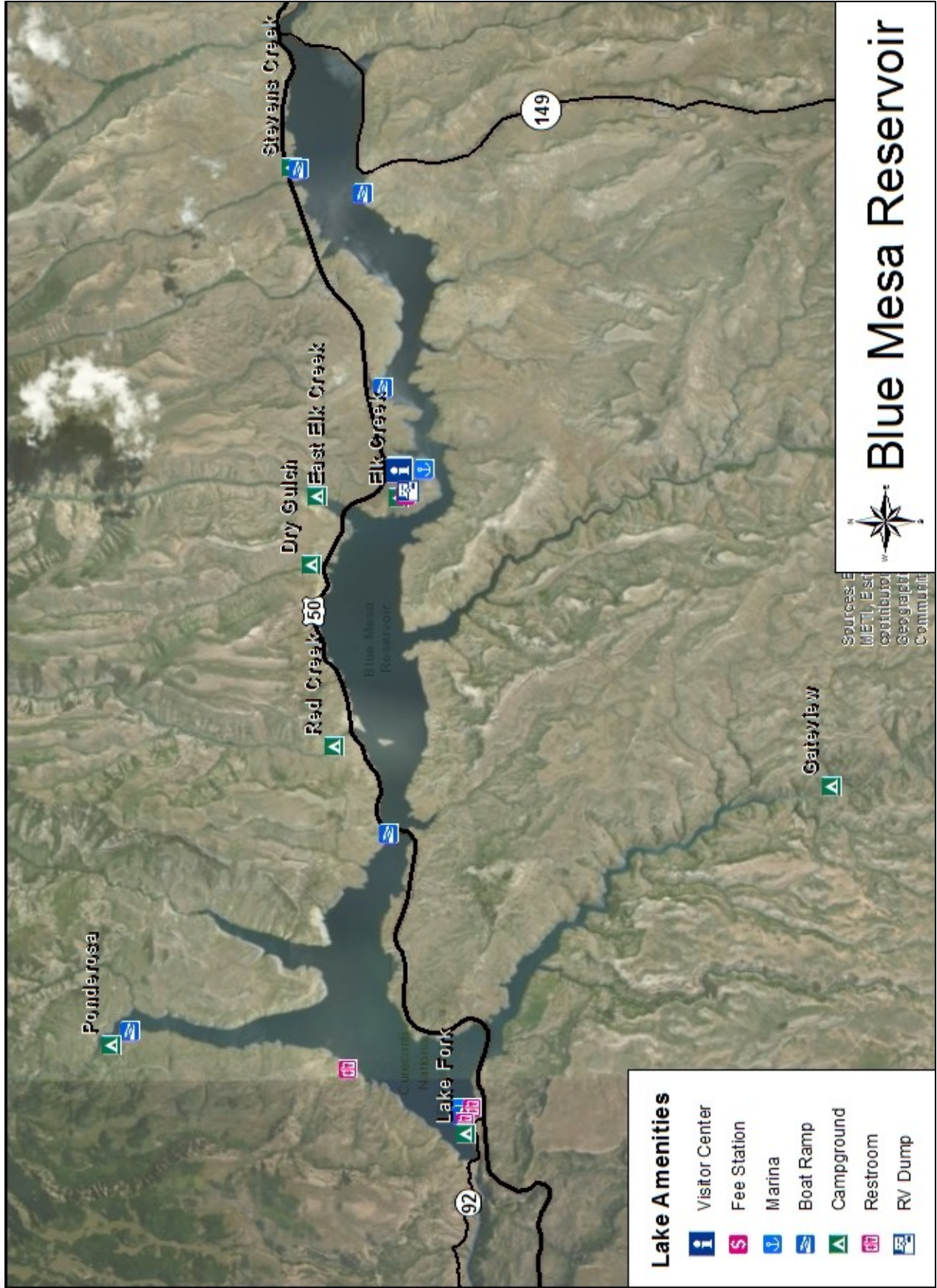
Colorado Parks and Wildlife

(800) 244-5613

cpw.state.co.us/thingstodo/Pages/Fishing.aspx

Water Recreation

Numerous boat ramps/launch (6), boat rentals available at Elk Creek marina. Kayaking, sailing, windsurfing, and water skiing are very popular. Blue Dam Reservoir is designated as a Gold Medal & Wild Trout Water, which makes it a fishing paradise. Ice fishing is popular in the area of Lola Basin.



Blue Mesa Reservoir

Sources: METL, East
 contributors
 Geographic
 Community

- Lake Amenities**
- Visitor Center
 - Fee Station
 - Marina
 - Boat Ramp
 - Campground
 - Restroom
 - RV Dump