



New Mexico, USA

  @CityofAztec

LAKE NIGHTHORSE

General Information

Lake Nighthorse was constructed by the Bureau of Reclamation as part of the Animas La Plata (ALP) Project. The lake is full and the surface area is approximately 1,500 acres. The lake is located two miles from Durango and is poised to provide a significant recreational amenity to the area. The recreation plan and lease agreement between the Bureau of Reclamation and City of Durango was approved and signed January 2017.

www.usbr.gov/uc/progact/animas

City of Durango Parks and Recreation Department
949 E. 2nd Ave.
Durango, CO 81301
(970) 375-7321

www.durangogov.org/LakeNighthorse

Activities

Boating (with open-air-exhaust), windsurfing, tubing, sailboarding, and fishing.

Facilities

The lake is only open for day use. A boat ramp is available for motorized and non-motorized boats, however there are time and wake restrictions.

www.durangogov.org/LakeNighthorse

Fees

All day use passes may be purchased during hours of operation at the Entrance Station. Fishing license is required from the Colorado Parks and Wildlife.

Fishing

Rainbow Trout, Brown Trout, and Kokanee Salmon have been stocked since 2011. Other species in the lake include White and Flannelmouth suckers, Fathead Minnows, Johnny Darters, and Crayfish. Fishing restrictions are enforced.

Fishing License

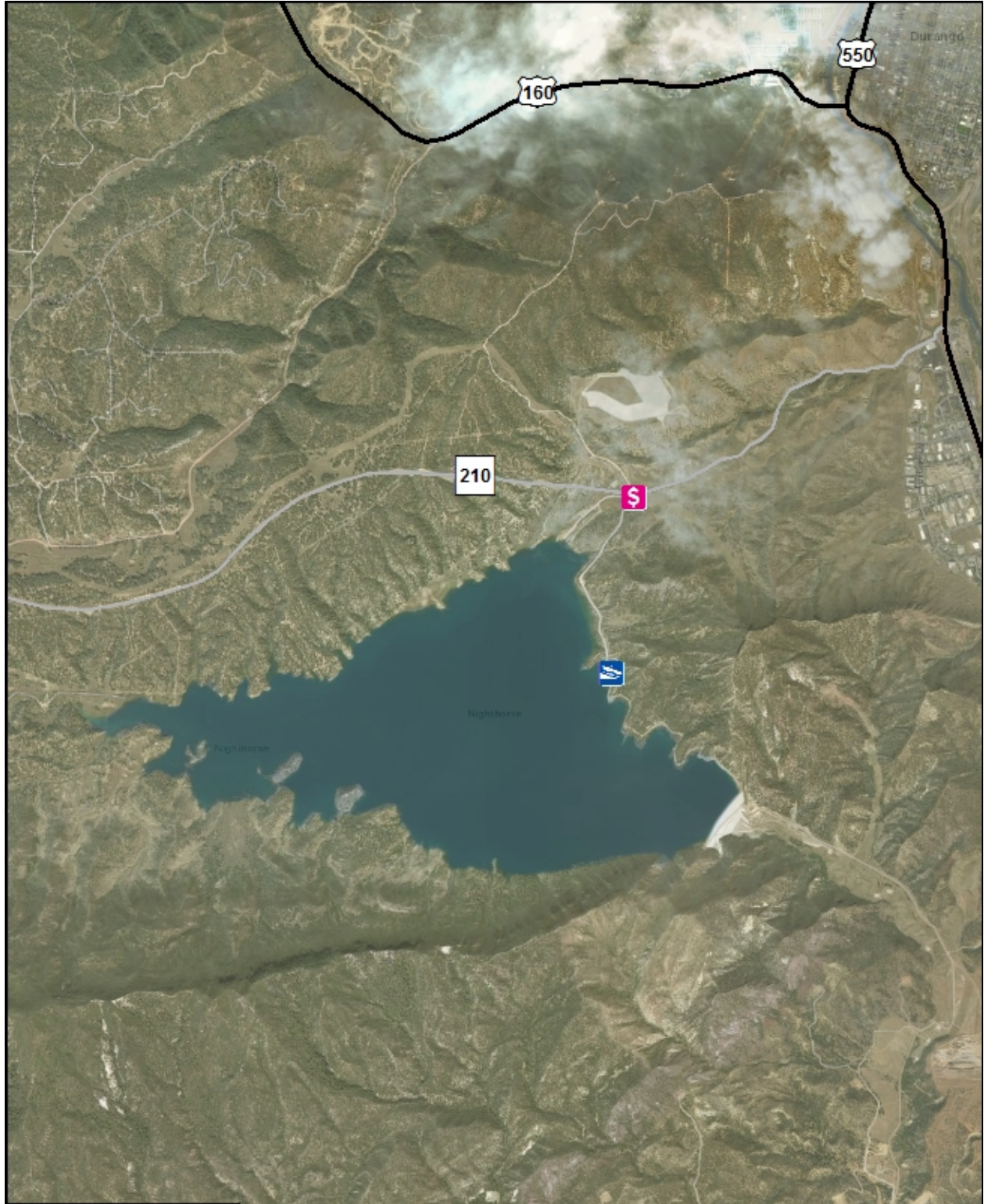
Colorado Parks and Wildlife
(800) 244-5613

cpw.state.co.us/thingstodo/Pages/Fishing.aspx



Water Recreation

Boats with open-air-exhaust are permitted. A boat permit is required for use of motorized crafts in compliance with the State of Colorado Department of Natural Resources regulations for aquatic nuisance species boat inspections of all nonexempt watercraft. Please familiarize yourself with the Boater's Guide to Aquatic Nuisance Species (ANS) Inspections brochure prior to boating at Lake Nighthorse.

cpw.state.co.us/Documents/ANS/BoatersGuideToANS.pdf



Lake Amenities

-  Boat Ramp
-  Fee Station

Source: Esri, HERE, Garmin, USGS, Imagery, Mapbox, OpenStreetMap contributors, Swatch, Stream, Microsoft



Lake Nighthorse