



New Mexico, USA

  @CityofAztec

## McPHEE RESERVOIR

### **General Information**

Located just northwest of the town of Dolores, CO, the surrounding recreation area is managed by the San Juan National Forest. It is the largest reservoir in the San Juan National Forest and second largest in Colorado, with over 40 miles of shoreline.

San Juan National Forest  
15 Burnett Court  
Durango, CO 81301  
(970) 247-4874  
(877) 444-6777 (for reservations)  
[www.fs.usda.gov/sanjuan](http://www.fs.usda.gov/sanjuan)

### **Activities**

Boating, camping, fishing, hiking, mountain biking, and wildlife viewing.

### **Facilities**

#### **McPhee Complex**

Campground with three loops, restrooms available at each location. Pinon and Juniper Loops contain 71 campsites with paved access and parking, picnic sites, barrier-free flush toilets, and 24 sites with electric hookups. Two sites offer tables and toilets accommodating wheelchairs. A dozen campsites are walk-ins with tent pads near scenic overlooks. There are 50 reservable sites, 12 with electricity, and 21 non-reservable sites. The third loop, Moqui Group, also has 4 group campsites available for reservation (with limited electrical hookups). There are volleyball posts, a ball field, and horseshoe pits (you supply the equipment).

[www.fs.usda.gov/recarea/sanjuan/recarea/?recid=43054](http://www.fs.usda.gov/recarea/sanjuan/recarea/?recid=43054)

#### **Doc's Marina** (970) 882-2294

A full service marina and boat launch that is open from April through October. Boat ramps are closed unless there are mussel inspectors on site. Services provided include boats/slips/buoys/pontoons/kayak rentals, fuel sales, daily fishing information, BBQ grills, depth finder, and fishing rods and tackle.

<https://docsmarina.com>

#### **House Creek Campground**

The campground has 65 campsites in three loops; two are designed for wheelchairs. 35 of the sites are reservable, 12 with electric, and 25 sites are non-reservable. The two adjacent group areas can each accommodate 30 people and can also be reserved in advance (no electrical hookups are available in the group sites). There is an open play area, composting toilets, sanitary dumping station, group picnic areas, and four-lane boat ramp.

[www.fs.usda.gov/recarea/sanjuan/recreation/camping-cabins/recarea/?recid=42982&actid=29](http://www.fs.usda.gov/recarea/sanjuan/recreation/camping-cabins/recarea/?recid=42982&actid=29)

**Fees**

Camping fees.

Fishing license is required from the Colorado Parks and Wildlife.

**Fishing**

Regularly stocked with salmon, trout, bass, catfish, walleye, and panfish.

**Fishing License**

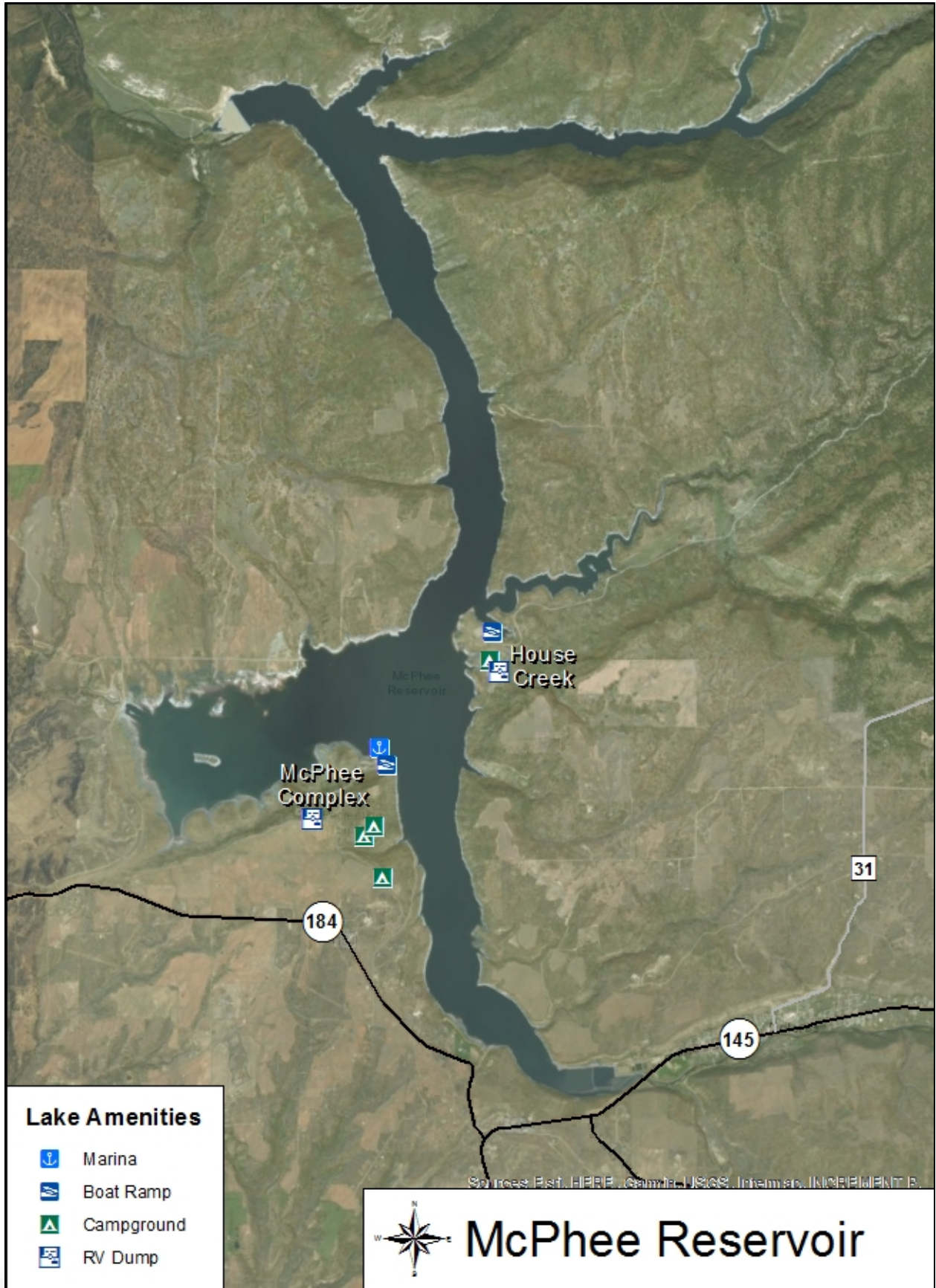
Colorado Parks and Wildlife

(800) 244-5613

[cpw.state.co.us/thingstodo/Pages/Fishing.aspx](http://cpw.state.co.us/thingstodo/Pages/Fishing.aspx)

**Water Recreation**

Water recreation includes motor boating, fishing, paddle boarding, and water skiing.



**Lake Amenities**

-  Marina
-  Boat Ramp
-  Campground
-  RV Dump

 **McPhee Reservoir**