



New Mexico, USA

  @CityofAztec

## SWEITZER LAKE

### **General Information**

Located near Delta, CO, the land was donated in 1953 by the Morgan Sweitzer family to what is now Colorado Parks & Wildlife. The man-made Sweitzer Lake was built for the sole purpose of recreation.

Crawford State Park  
P O Box 173  
Delta, CO, 81416  
(970) 921-5721

[cpw.state.co.us/placestogo/parks/SweitzerLake](http://cpw.state.co.us/placestogo/parks/SweitzerLake)

### **Activities**

Boating, fishing, hiking, mountain biking, horseback riding, hunting, and other water recreation.

### **Facilities**

There is no camping at Sweitzer. Nearby Crawford State Park offers great camping opportunities. Swim beach and a boat ramp is located at the west end of the lake near the dam.

### **Fees**

Daily or annual passes.

Fishing and hunting license is required from the Colorado Parks and Wildlife.

### **Fishing**

Channel catfish, blue catfish, bluegill and carp. Fish in this lake contain selenium and are not edible. CATCH AND RELEASE ONLY.

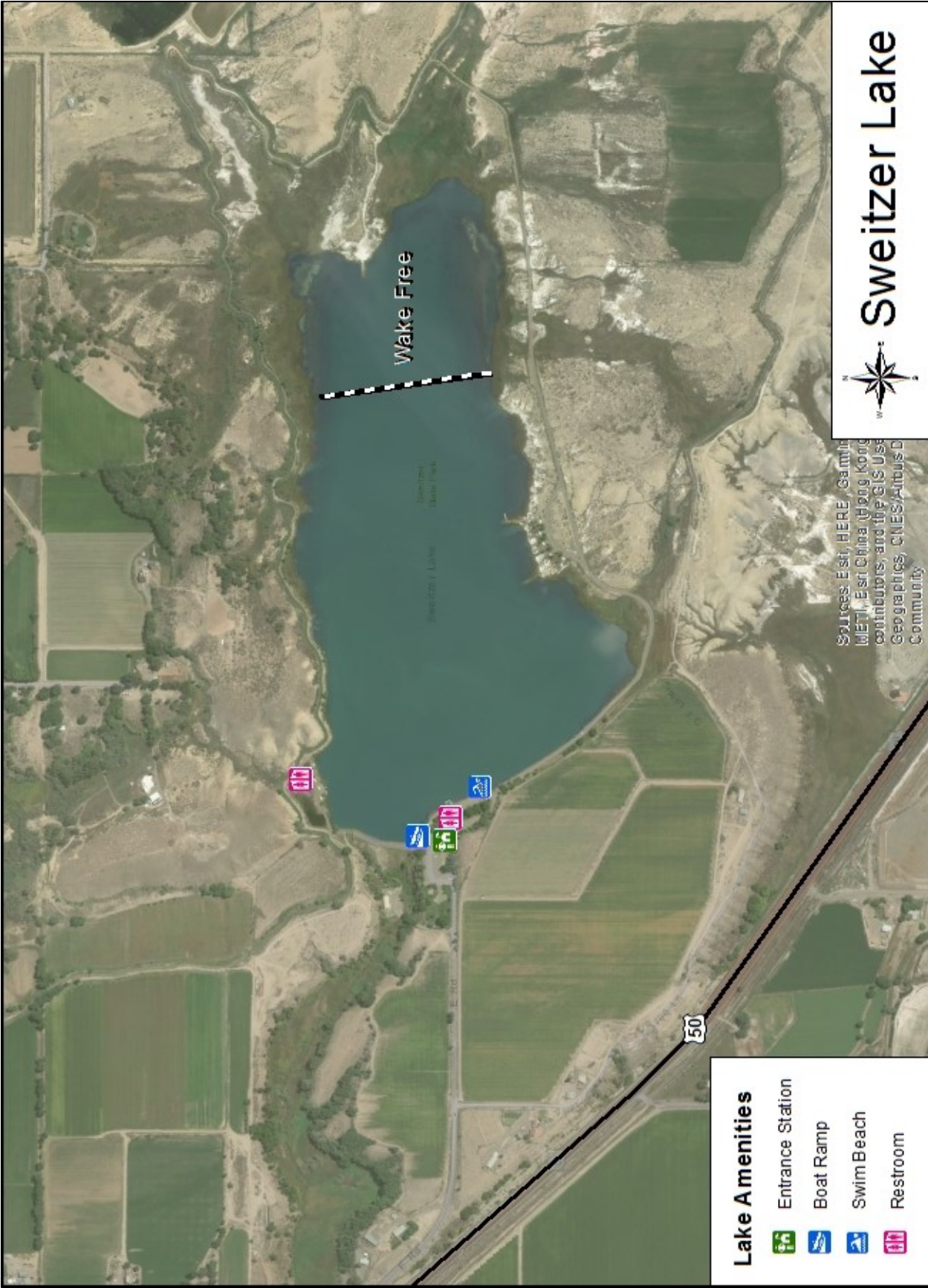
### **Fishing License**

Colorado Parks and Wildlife  
(800) 244-5613

<http://cpw.state.co.us/thingstodo/Pages/Fishing.aspx>

### **Water Recreation**

Power boating, sailing, jet-skiing, canoeing, paddle and sailboarding, water skiing, and scuba diving. Swimming is permitted in the swim area only. Boaters are subject to Colorado boating statutes and regulations; brochures are available at the entrance station and park headquarters.




**Sweitzer Lake**

Sources: Esri, HERE, Garmin,   
 MIIT, Esri China (Beijing) Co., Ltd.,   
 contributors, and the GIS User   
 Community, CNES/Airbus D   
 Community

**Lake Amenities**

-  Entrance Station
-  Boat Ramp
-  Swim Beach
-  Restroom