



New Mexico, USA

  @CityofAztec

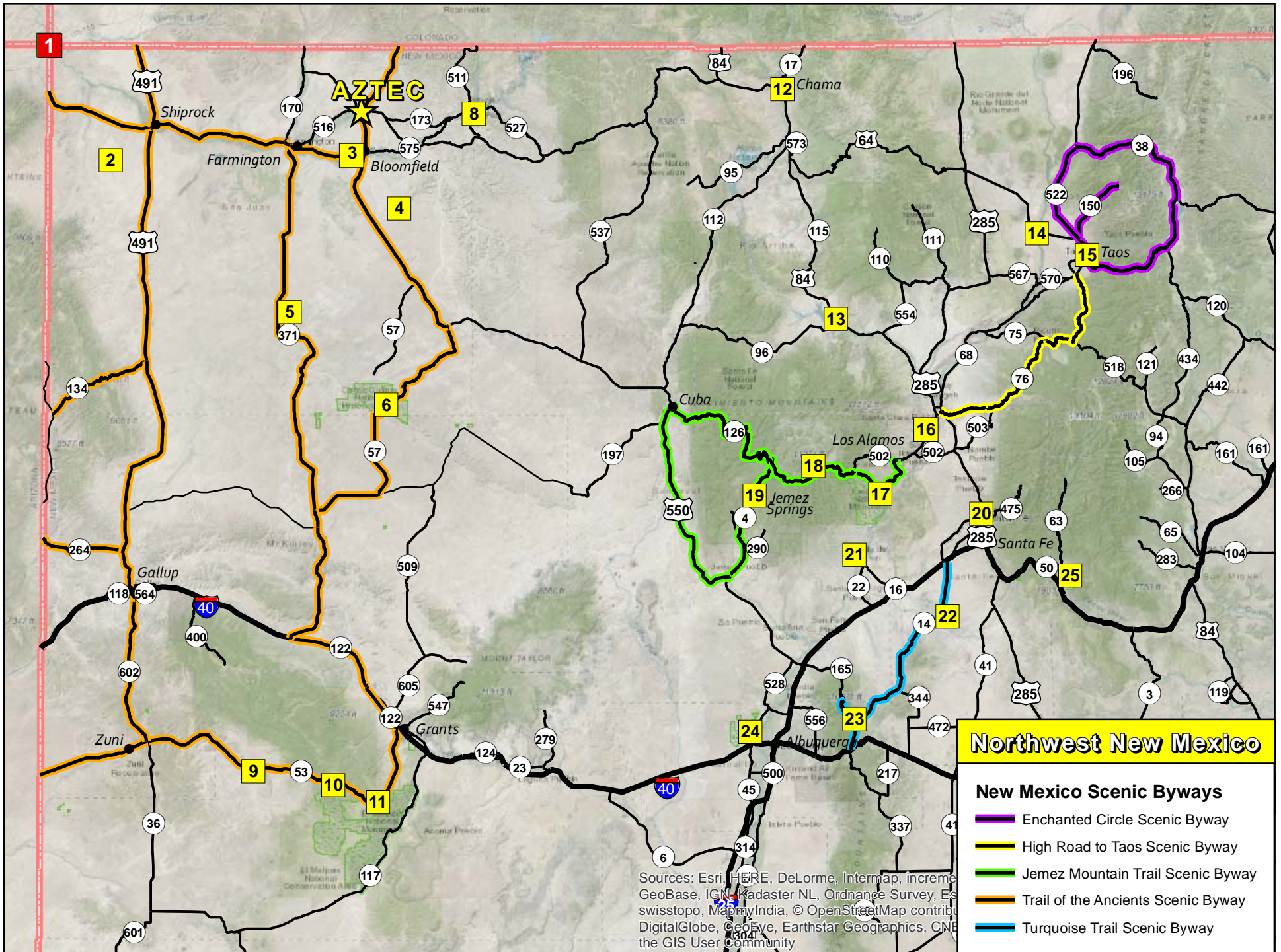
## Northwest New Mexico Locales

Map	Attraction	Miles	Web
	Aztec Ruins National Monument		<a href="http://www.nps.gov/azru">www.nps.gov/azru</a>
1	Four Corners National Monument	76	<a href="http://www.navajonationparks.org">www.navajonationparks.org</a>
2	Shiprock Pinnacle	50	<a href="http://shiprock.navajochapters.org">shiprock.navajochapters.org</a>
3	Salmon Ruins Museum	11	<a href="http://www.salmonruins.com">www.salmonruins.com</a>
4	Angel Peak Recreation Area	27	<a href="http://www.blm.gov/visit/angel-peak-scenic-area">www.blm.gov/visit/angel-peak-scenic-area</a>
5	Bisti / De-Na-Zin Wilderness Area	70	<a href="http://www.blm.gov/visit/bisti-de-na-zin-wilderness">www.blm.gov/visit/bisti-de-na-zin-wilderness</a>
6	Chaco Culture National Historical Park	80	<a href="http://www.nps.gov/chcu">www.nps.gov/chcu</a>
7	Wines of the San Juan	22	<a href="http://www.winesofthesanjuan.com">www.winesofthesanjuan.com</a>
8	Navajo Lake State Park	27	<a href="http://www.stateparks.com/navajo_lake_state_park_in_new_mexico.html">www.stateparks.com/navajo_lake_state_park_in_new_mexico.html</a>
9	El Morro National Monument	192	<a href="http://www.nps.gov/elmo">www.nps.gov/elmo</a>
10	Ice Cave & Bandera Volcano	175	<a href="http://www.icecaves.com">www.icecaves.com</a>
11	El Malpais National Monument	179	<a href="http://www.nps.gov/elma">www.nps.gov/elma</a>
12	Cumbres & Toltec Scenic Railroad	106	<a href="http://cumbrestoltec.com">cumbrestoltec.com</a>
13	Abiquiu	148	
14	Rio Grande del Norte National Monument	186	<a href="http://www.blm.gov/visit/rgdnnm">www.blm.gov/visit/rgdnnm</a>
15	Taos / Taos Pueblo	209	<a href="http://taos.org">taos.org</a>
16	Puye Cliff Dwellings	207	
17	Bandelier National Monument	198	<a href="http://www.nps.gov/band">www.nps.gov/band</a>
18	Valles Caldera National Preserve	155	<a href="http://www.nps.gov/vall">www.nps.gov/vall</a>
19	Jemez Springs	155	
20	Santa Fe	206	<a href="http://www.santafe.org">www.santafe.org</a>
21	Kasha-Katuwe Tent Rocks National Monument	196	<a href="http://www.blm.gov/visit/kktr">www.blm.gov/visit/kktr</a>
22	Origami in the Garden	200	<a href="http://outsidetheboxstudio.com">outsidetheboxstudio.com</a>
23	Tinkertown Museum	199	<a href="http://tinkertown.com">tinkertown.com</a>
24	Petroglyph National Monument	174	<a href="http://www.nps.gov/petr">www.nps.gov/petr</a>
25	Pecos National Historical Park	229	<a href="http://www.nps.gov/peco">www.nps.gov/peco</a>



Learn more about these locales in Southwest Colorado at [www.aztecnm.com/fourcorners/newmexico](http://www.aztecnm.com/fourcorners/newmexico)

110 North Ash Avenue • Aztec, New Mexico 87410 • (505) 334-9551 • [www.AztecNM.com](http://www.AztecNM.com)



## Northwest New Mexico

### New Mexico Scenic Byways

- Enchanted Circle Scenic Byway
- High Road to Taos Scenic Byway
- Jemez Mountain Trail Scenic Byway
- Trail of the Ancients Scenic Byway
- Turquoise Trail Scenic Byway

Sources: Esri, HERE, DeLorme, Intermap, increment GeoBase, IGN, Kadaster NL, Ordnance Survey, Esri, Swisstopo, MapboxIndia, © OpenStreetMap contributors, DigitalGlobe, GeoEye, Earthstar Geographics, CNES, the GIS User Community