

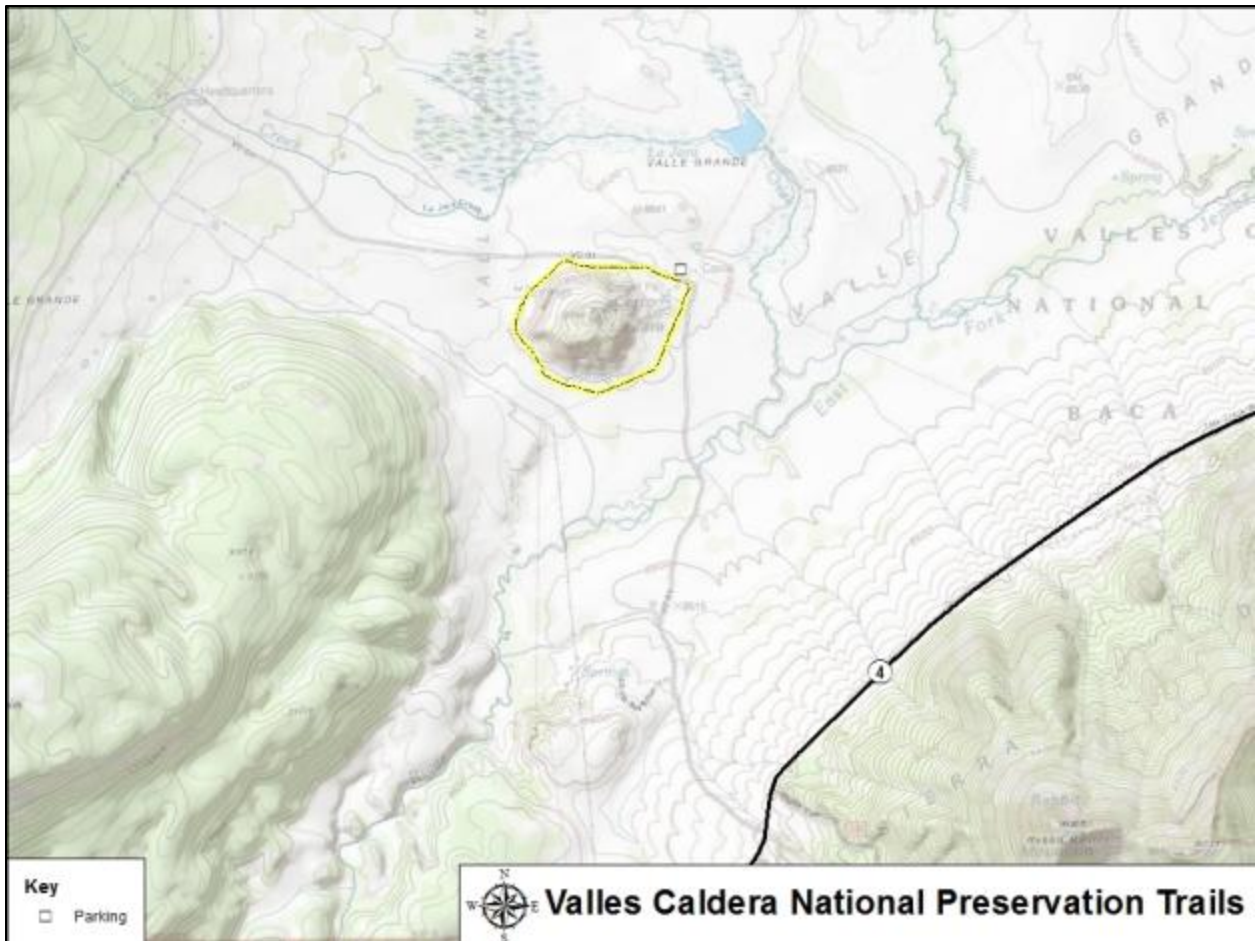


Valles Caldera National Preserve Trails

Cerro La Jara Loop

This easy 1.5 mile loop goes around the center caldera located within the preserve. The start of the trail begins at the visitor/welcome center.

As of 2019, entrance into the National Preserve is \$20 per vehicle.



USING LOS ALAMOS COUNTY OPEN SPACE

The Los Alamos County Trail Network is open to non-motorized use only.

Resource Protection: All cultural resources such as Ancestral Pueblo room blocks, pot sherds, petroglyphs, and historical artifacts are protected by Federal and State law. Let all cultural resources lie undisturbed.

Share the Trail: These are multi-use trails for pedestrians, equestrians, and bicyclists. Bicyclists should yield to all other users.



Dogs in Los Alamos County Open Space: All dogs must be on a leash when within 100 yards of a trailhead. Dogs must be under voice and sight control at all times.

Safety: When exploring trails, always carry water, sunscreen, a hat, extra clothing, a flashlight, and a navigational aid.

More Info @

www.losalamosnm.us/government/departments/community_services/parks_recreation_and_open_spaces/openspaceandtrails