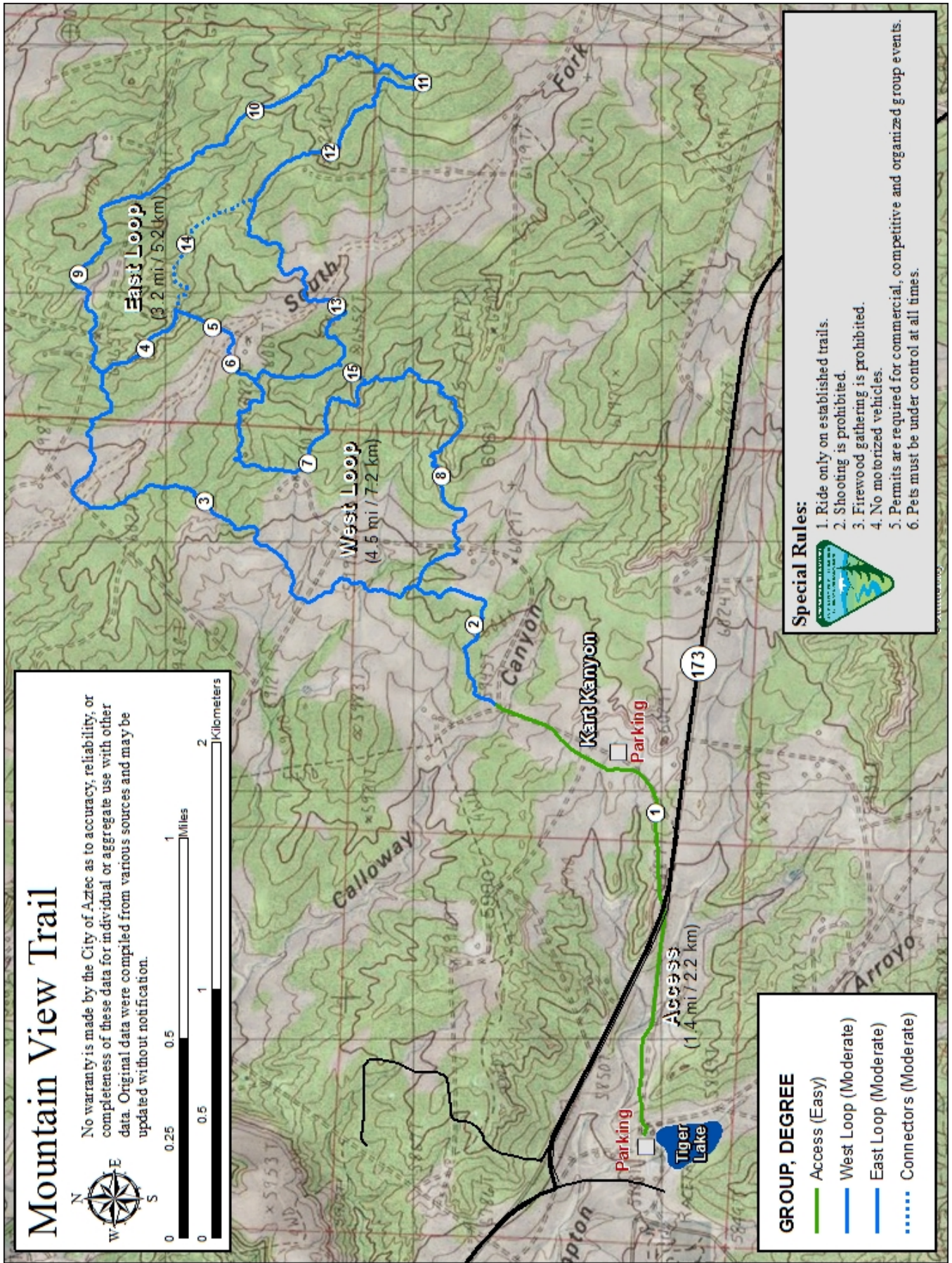


Mountain View Trail



- Activities:** Biking, hiking
- Facilities:** None. Restrooms and drinking water are not available.
- Season / Hours:** Open year-round.
- Description:** Mountain View is a single track
- Access:** The area lies north of Aztec Kart Canyon go-kart track. Parking is available either at Tiger Park or south of the Kart Canyon track.
- Special Rules:**
- Ride only in areas or on trails open for use.
 - No overnight use.
 - Firewood gathering is prohibited.
 - All shooting is prohibited.
- Play Safely:**
- Know your limitations.
 - Ride with a partner.
 - Always wear a helmet, eye protection, and protective clothing.
 - Make sure each rider in your group has a map and knows where the party is headed.
 - Expect the unexpected. Take plenty of water and high energy food. Pack a first aid kit. Carry tools needed for minor repairs.

Have a positive influence on the area and those around you, practice the **Tread Lightly!**

TTravel only where permitted.

Respect the rights of others.

Educate yourself.

Avoid streams, meadows, and wildlife areas.

Drive and travel responsibly.

BLM Farmington Field Office

6251 College Blvd. Suite A
 Farmington, NM 87402
 (505) 564-7600
 (800) 842-3127

Report Vandalism

Report any vandalism to the Bureau of Land Management (BLM) hot line at 505-564-7600.

Segment	Name	Feet	Miles
1	Access	7,133	1.4
2	West Loop: Access	2,798	0.5
3	West Loop: Zingers	8,298	1.6
4	West Loop: Roll-X	1,439	0.3
5	West Loop: Dirt Road	794	0.2
6	West Loop: Whip Tail	829	0.2
7	West Loop: West View	5,243	1.0
8	West Loop: Mount Cowskull	4,320	0.8
9	East Loop: 3 Beer Buzz	3,339	0.6
10	East Loop: McKenzie Ridge	4,245	0.8
11	East Loop: Dog Leg	1,546	0.3
12	East Loop: Beach Cruiser	2,726	0.5
13	East Loop: Tree Hugger	5,129	1.0
14	Short Cut	2,287	0.4
15	Short Cut	490	0.1
TOTAL (Excluding Short Cuts)		47,837	9.1